

# GET CONNECTED TO BREVARD'S #1 LEADERSHIP NETWORK



## LEAD BREVARD

Leadership Brevard is an eight-month program designed for recognized and emerging leaders in their respective fields who have demonstrated a deep commitment to improving the quality of life in Brevard.

The September through May curriculum guides a group of diverse community professionals

through a highly interactive series of cutting edge seminars on critical issues. The monthly seminars include site visits and interactions with key decision-makers to inspire participants to address community challenges, as well as opportunities to enhance self-awareness of leadership approaches.

### CONGRATULATIONS TO THE LEADERSHIP BREVARD CLASS OF 2014



Clear Channel Outdoor  
VP Real Estate and Public Affairs

MATT ASHLEY



Florida Institute of Technology  
AVP, Foundation Relations

DORCAS BLUE



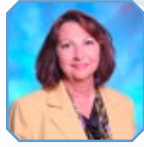
Bluegrass Investment Group, Inc.  
Certified Financial Planner

ROSS BROWN



Carr, Riggs & Ingram, LLC  
Manager

YVONNE CLAYBORNE



Parrish Medical Center  
Executive Director of Critical Care Services

LORETTA BEORLEGUI



Waste Management  
Community Affairs Manager

AMY BOYSON



Berman Hopkins Wright & LaHam CPAs and Associates, LLP  
Sr. Tax Manager

ERIC BURTON



Artemis  
Account Manager

JUSTIN COMBS



Sorensen Moving & Storage  
Sr. Sales Executive

CLYDE BISHOP



Aerodyne Industries  
Project Manager

ELLEN BROWN



Development Consultant

WENDY BYRNES



City of Rockledge Police Department  
Sergeant

CHRIS CRAWFORD



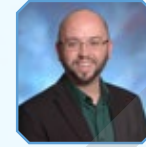
SCB Marketing  
Director of Sales

CHERISE CZABAN



NASA  
Senior Program Analyst

CHRIS DAVIS



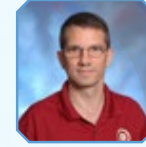
Advent Lutheran Church Suntree & Melbourne Beach  
Contemporary Worship Leader

CHRIS DICKMAN



Florida Institute of Technology  
Business Manager, Economic Development

MARY DYER



Florida Institute of Technology  
Assistant VP, Director of Online Learning

BRIAN EHRLICH



Space Coast Cancer Center  
Marketing & Communications Director

DAWN FAUST



Florida Eye Associates  
Physician Relations

BRIDGETTE GIFFORD



Parrish Medical Center  
Director, Perioperative Services

MATT GRAYBILL



AVCON, INC.  
Sr. Project Manager

ROB HAMBRECHT



American Services Technology, Inc.  
Director of Business Development

MOSES HARVIN II



Willson Hattaway Law, LLC  
Attorney

ROBYN WILLSON HATTAWAY



Health First Communications  
Manager

JENI HATTER



Holy Trinity Episcopal Academy  
Head of School

CHRISTOPHER HAYES



Brevard Health Alliance, Inc.  
Financial Planning & Analytics

AUSTIN HELTON



Community Credit Union of Florida  
VP of Technology

DAVID HILL



Treaty Consulting Group, LLC  
President

GREG HOWES



NASA  
Launch Vehicle Deputy Manager, Commercial Crew Program

DANA HUTCHERSON



Wuesthoff Health System  
Marketing Coordinator

KAMEN JENKINS



SCB Marketing  
Client Services Manager

EMILY KING



Florida Institute of Technology  
Advisor, First Year Experience

JENNY LEE



Glaxo Smith Kline, Inc.  
Sr. Executive Therapeutic Specialist

MARY LINDHOLM-GUNTER



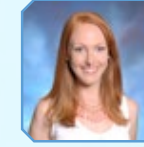
NASA  
Chief, Administrative Management Office

BONNI PERRY MCCLURE



AAR Airlift  
VP, Human Resources

KYLE MCGILLIVRAY



FLORIDA TODAY Communications  
Director of Advertising

STEPHANIE MCLOUGHLIN



The Viera Company  
Associate Corporate Counsel

DREW MELVILLE



Palm Bay Police Department  
Community Services Division Manager

DANA PACKARD



Brevard County Sheriff's Office  
Sergeant

MICHELLE PATRICK



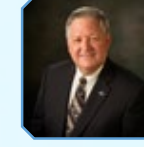
Brevard Health Alliance, Inc.  
Project Manager

MAEGEN PEARCE



Wuesthoff Health System  
Chief Nursing Executive

SUDANDRA RATNASAMY



Canaveral Port Authority  
Deputy Executive Director/Chief Financial Officer

RODGER REES



Tropical Realty of Suntree  
Broker/Owner

MITCH RIBAK



Alluvionic, Inc.  
President

WENDY ROMEU



Honest Gabe  
Principal

GABRIEL ROTHBLAT



Certified General Contractors, Inc.  
Vice President

RYAN RUNTE



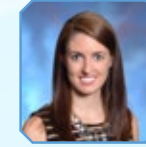
Sanchez Law Firm PA  
Managing Attorney

CHRISTY SANCHEZ



Office of the State Attorney  
Executive Director

TYLER SIROIS



GrayRobinson  
Attorney

AMANDA GIBSON SMITH



Devereux Florida  
Administrator

TINA SMITH



Brevard County Emergency Management  
Homeland Security Coordinator

SHELLEY SZAFRANIEC



Media-Over-Matter Productions, LLC  
CEO

VINNIE TARANTO



Brevard County Board of County Commissioners  
Assistant County Manager

VENETTA VALDENGO



L.C. Warren Group  
President/ Financial Advisor

LANCENT C. WARREN, SR.



Sunrise Bank  
Vice President/ Branch Manager

MARY WATKINS



Craig Technologies  
Corporate Recruiter

BEN YEARGIN



PNC Bank  
Vice President Commercial Banking

JACKSON YOUNG

### HURRY, SPACE IS LIMITED.

Get connected today by enrolling online at [www.LEADBrevard.org](http://www.LEADBrevard.org) or call LEAD Brevard for additional information at (321) 632-8222.